



Erratum

Erratum to “Genetically encoded probe for fluorescence lifetime imaging of CaMKII activity” [Biochem. Biophys. Res. Commun. 369 (2008) 519–525]

Showming Kwok^a, Claudia Lee^b, Susana A. Sánchez^b, Theodore L. Hazlett^b, Enrico Gratton^b, Yasunori Hayashi^{a,*}

^aRIKEN-MIT Neuroscience Research Center, The Picower Institute for Learning and Memory, Department of Brain and Cognitive Sciences, Massachusetts Institute of Technology, 77 Massachusetts Avenue 46-4243A, Cambridge, MA 02139, USA

^bLaboratory for Fluorescence Dynamics, Department of Biomedical Engineering, 3120 Natural Sciences II, University of California-Irvine, Irvine, CA 92697-2715, USA

Due to a printer's error, Fig. 1A did not reproduce well in the printed issue. For the reader's convenience, Fig. 1 is provided here.

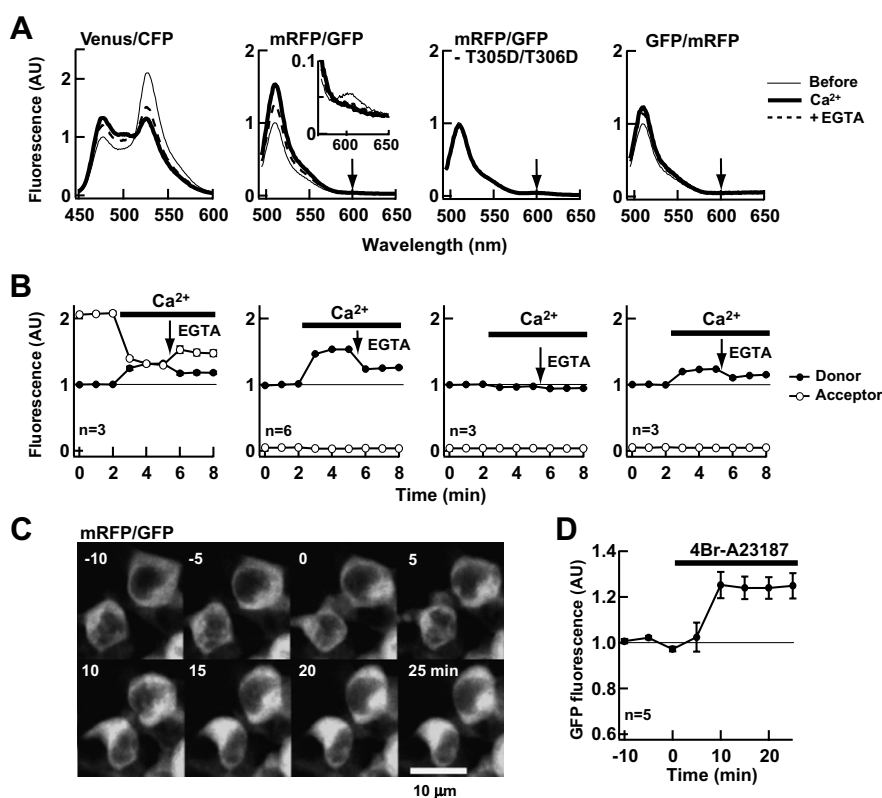


Fig. 1. mRFP/GFP-Camui showed a significant dequenching upon stimulation. (A) The emission spectra of the Venus/CFP-Camui, mRFP/GFP-Camui, mRFP/GFP-Camui with T305D/T306D mutations and GFP/mRFP-Camui made with the HEK293T cell lysate expressing each construct before, 3 min after the addition of 1 mM Ca²⁺, and 3 min after the addition of 1.5 mM EGTA, at the donor specific excitation. The expected positions of acceptor peaks are shown by downward arrows. A 10-fold magnification of the mRFP emission peak is shown in the inset for mRFP/GFP-Camui. (B) A plot of donor and acceptor peak intensity over time, normalized by the donor peak intensity before application of Ca²⁺. The response was monitored every 1 min. (C) GFP fluorescence image of HEK293T cells expressing mRFP/GFP-Camui. (D) A summary of GFP fluorescence intensity in HEK293T cells. Intensity was normalized to the average intensity prior to stimulation for each cell. The error bars are SEM.

DOI of original article: 10.1016/j.bbrc.2008.02.070

* Corresponding author.

E-mail address: yhayashi@mit.edu (Y. Hayashi).